

**IBUS**  
Digital Infrastructure Solutions.

# Living Networks

Connecting Everyone, Everything & Everywhere

An Infratech platform offering a one-stop solution to tackle multiple digital connectivity challenges in enterprise spaces

**IBUS Living Networks** breathes life into large commercial spaces offering unified, protocol-agnostic infrastructure. We bring together mobile, Wi-Fi and IoT solutions under one robust platform. Eliminate the complexity of fragmented systems and turn commercial buildings into fully connected hubs where all systems operate harmoniously. This convergence simplifies operations, maximizes network efficiency, reduces costs and ensures seamless connectivity.

**IBUS  
at a  
Glance**

**7000+**

Unique sites supported,  
covering diverse  
industries & requirements

upto

**30%**

reduction in operational  
costs through optimized  
energy management

**95%**

coverage across  
major commercial  
spaces

**99.9%**

Uptime, ensuring  
unparalleled reliability

**Our Integrated Infratech Solutions breathe life into buildings**

**Integrated solutions**  
that grow with your digital needs

iBUS serves as the single window, ensuring your real estate is hyper-connected through a comprehensive suite of solutions

# Mobility Solutions

Connecting your world with future-ready mobility solutions—**seamless, scalable, and 5G-ready**

## DAS for Seamless Mobile Connectivity

- Enhances in-building voice and data coverage for uninterrupted service in high-traffic environments like malls, hospitals, hotels, education campuses, and tech parks.
- Neutral-host model, compatible with all major telecom operators, ensuring broad coverage.
- Eliminates dead zones, delivering consistent signal strength in areas like basements, elevators, and parking lots.
- With IBWave software, we custom design solutions for every project, while maintaining the aesthetics.
- Scalable with 5G ready infrastructure integrating the existing network.

## Fiber Integration for High-Speed Data

- Our infrastructure supports all enterprise-based services such as ILL, MPLS, VPN, P2P, broadband, and Wi-Fi.
- It also allows for the integration of CCTV, VDP, access control, and IP-based BMS services
- Supports multiple ISPs, delivering flexible and scalable high-speed connectivity solutions.
- Ultra-fast data transfers using GPON technology, critical for high-end devices and large-scale operations.
- Reduces latency, enabling seamless real-time collaboration, video conferencing, and cloud-based applications.



Fragmented Systems to  
Seamless Connectivity



Dead Zones to  
Full Coverage



High Costs to  
Cost-Effective Operations

1<sup>st</sup>

Company in Asia to be  
certified by OpenRoaming

**Microsense**  
An IBUS Enterprise

## Managed Wi-Fi and Screen Casting Services

Elevate your customer experience with  
secure Wi-Fi and personalized  
entertainment.

### High-Speed, Secure Wi-Fi

- As a Class A ISP, we ensure consistent performance and reliability across diverse environments - hotels, enterprises, malls etc.
- With custom access policies and user roles management, we provide secure and customized Wi-Fi solutions.
- Cloud-based solutions offer centralized control and management, providing full visibility into network health.
- 24/7 proactive network monitoring ensures minimal downtime with real-time issue resolution.
- Built-in analytics tools for deeper network insights and performance tracking.

### GRE (Guest Room Entertainment)

- Integrates screen casting services that allow guests to wirelessly stream content from their devices (Netflix, YouTube, Prime Video) to larger in-room displays.
- Personalized entertainment options tailored to guest preferences, offering a seamless, tech-rich in-room experience.
- Unified TV channel management enables hotels to streamline and manage guest room content.
- Central PMS integration, allowing management to deliver personalized offers and messages.
- Supports multiple concurrent devices, ensuring a smooth experience even during peak usage times.

### Advanced Security Features

- 802.1X policy-based authentication ensures secure access for users and devices, safeguarding your network from unauthorized access.
- Built-in encryption protocols and robust digital access controls keep sensitive data secure, compliant with industry standards.
- One-time secure login setup.

#### Market Leader

Foremost managed  
Wi-Fi services partner  
in hospitality

#### 8 Countries

Global presence across USA,  
UK, UAE, Maldives, Indonesia,  
Thailand, India and Sri Lanka

#### Class A ISP

Benefit from superior  
bandwidth planning  
& distribution

#### 40+ Years

Partnering with top  
players across  
industries

# iBOS: Intelligent Building Operating Systems

Your Partner in Transforming Operational Efficiency with Advanced IoT Solutions

## Consultative, Data-Driven Approach

- Based on our i-Siddhi framework, a holistic approach to building optimization, data from various building systems is analyzed using AI to identify inefficiencies and transform insights into actionable optimization strategies.
- Solutions are tailored to each building's unique needs, ensuring maximum energy savings and operational improvements.
- Proven to deliver a return on investment in 12 - 15 months, while enhancing overall efficiency and reducing costs.
- 850+ data points tracked per minute

**7X**

ROI with a payback period of 12-15 months.

**5M**

5+ Million Tons TCO<sub>2</sub> reduced per year.

**30%**

Achieve up to thirty percent energy savings.

**2.8M**

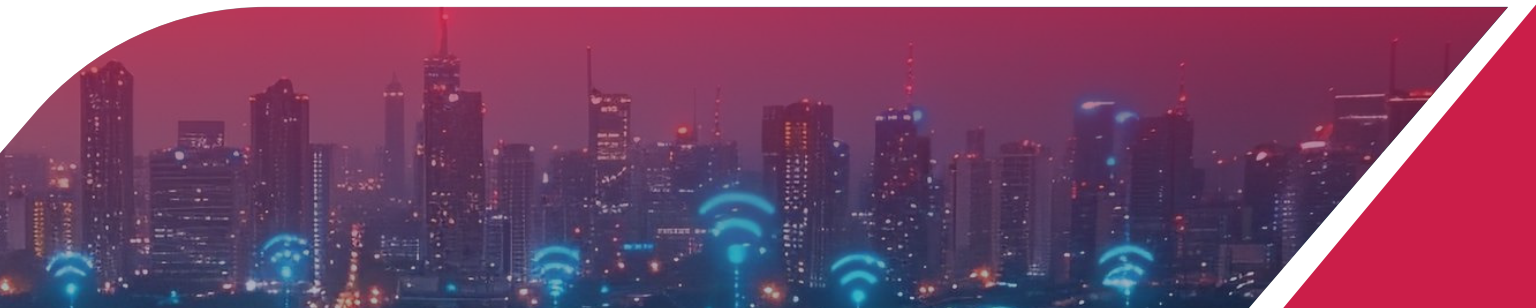
Million tons of CO<sub>2</sub> reduce in one year.

## Energy Monitoring & Optimization

- Continuously tracks and analyzes energy consumption in real-time, allowing for informed decision-making and significant improvements in energy efficiency.
- Centralized control of HVAC systems uses AI to automatically adjust settings based on occupancy and environmental conditions, leading to up to 30% energy savings.
- Custom automation logic is designed to optimize energy use, reduce operational costs, and enhance overall building performance.

## Environment Management & Optimization

- Monitors CO<sub>2</sub>, humidity, and particulate matter levels in real-time, ensuring air quality is consistently maintained below AQI 50 in high-traffic areas.
- Automated ventilation systems respond instantly to changes in air quality, maintaining a healthy environment in places like hospitals and hotels.
- Improves both environmental sustainability and operational efficiency by reducing the building's carbon footprint.





## Unified Platform

Seamlessly integrates mobile, Wi-Fi, and IoT, eliminating the need for multiple infrastructures

## Real-Time Management

Provides real-time monitoring and control over every connected system, enhancing operational performance and response time

## Cost Efficiency

Reduces operational costs through centralized management, lowering both CAPEX and OPEX

## Future-Proof Infrastructure

Supports existing 4G networks while being fully ready for 5G and IoT expansions

# Benefits

## Scalability

Ability to scale solutions on existing and new infrastructure

**Transforming  
fragmented systems  
into unified, seamless  
connectivity across  
any space**



## Smart IT Park

Eliminated dead zones, Seamless internet connectivity with FTTH/X & GPON, up to 30% energy savings with IoT driven EMS



## Mall

Uninterrupted mobile signal, with 4G/5G data connectivity, secure high-speed Wi-Fi, improved footfall and air quality with iBOS



## Office Building

Consistent mobile connectivity, high-speed internet, better air quality



## Hospital

iBOS for HVAC optimization and air quality, secure Wi-Fi, better mobile coverage, enhanced patient care



## Luxury Hotel

Strong mobile signal, secure Wi-Fi with 802.1X authentication, GRE for enhanced guest experience, iBOS for HVAC optimization and ESG monitoring

## DAS

for seamless mobile coverage

## GPON

for high-speed internet

## Managed Wi-Fi

for secure connections

## iBOS

for HVAC optimization, air quality and energy management



Hospitality



Enterprise



Retail



Educational Institutions



iBUS Network & Infrastructure Pvt Ltd is a leading infratech platform provider and a specialist in deploying and operating seamless neutral cellular and Wi-Fi connectivity in large commercial real estate such as IT parks, airports, hospitals, government institutions, hotels, malls, and education campuses. With 7000+ unique sites, covering over 550 million sq.foot of tenanted area across 40+ cities in India, iBUS is a pioneer in leading the 5G convergence landscape to build interoperable infrastructure for digital connectivity. The company also offers IoT solutions with Intelligent Building Operating System (iBOS), which enables building owners and operators across diverse industries—including hospitality, commercial real estate, malls, healthcare, and data centers—to improve operational efficiency and enhance energy efficiency.

## For more information

 [www.ibusglobal.com](http://www.ibusglobal.com)

 +91-80-25211222

 [info@ibusnetworks.com](mailto:info@ibusnetworks.com)



For the digital version of the brochure, scan here