

**IBUS**  
MOBILITY

**CONNECTIVITY**  
THAT **MOVES** WITH YOU



[ibusglobal.com](http://ibusglobal.com)

**iBUS Mobility** delivers future-ready mobility infrastructure that ensures seamless, scalable, and 5G-ready connectivity across buildings, residences, and public environments.

Designed with a builder-centric approach, our solutions address the evolving demands of today's spaces. They provide uninterrupted coverage, high-speed performance, and infrastructure that grows with your digital needs.

We integrate mobility solutions such as **FTTX, DAS, MIMO, and Small Cells** to strengthen indoor coverage, enhance signal quality, and ensure consistent, always-on connectivity.

## Reliable networks that scale effortlessly



Presence across **1,200+ sites**



**99.9% uptime** across all deployed sites



Coverage of **1.2 billion sq. ft.** of tenanted area across **50+ cities**



**250+ enterprises** connected to smarter digital futures



Footprint of **150+ million sq. ft.** in public buildings and institutions

## Mobility Solutions

Bringing high-capacity 4G/5G connectivity indoors



## Fibre to the X (FTTX)



### Faster Service Activation

Pre-installed fiber infrastructure reduces ISP activation time from 15–30 days to just a few hours.



### Neutral Network Architecture

iBUS FTTX offers a neutral network that supports multiple ISPs and digital services.



### Efficient Cable Management

Optimized cabling reduces cable volume by up to 80%, keeping shafts organized, safe, and clutter-free.



### Secure Network Access

Telecom shaft access is restricted to authorized ISP personnel for maintenance and upgrades.



### Support for IP Based Services

iBUS Mobility All-in-One VAS (Value Added Services) supports CCTV, Wi-Fi, intercom, digital signage, and more enabling cost-effective scalability.



### Enhanced Aesthetic Integrity

iBUS Mobility eliminates repeated cabling, preserves building aesthetics, and uses a unified, isolated fiber structure for operational efficiency.

## Why is FTTx Important ?

Increasing demand for:

- High-speed, reliable digital connectivity (Wi-Fi, Cloud, IoT)
- Premium building positioning and higher property valuation
- Improved WiredScore ratings

## The iBUS Commitment to Residential Properties

- Investments in both passive and active network elements are undertaken by iBUS Mobility and participating ISPs.
- iBUS Mobility is responsible for onboarding and integrating all ISPs under its neutral FTTX system using its DOT-approved IP-1 license.



## Distributed Antenna System ( DAS )



Ensures seamless indoor mobile coverage, even in challenging environments



Operates on a neutral-host model supporting all major telecom operators for broader coverage and cost optimization



Eliminates dead zones and ensures consistent signal strength across high-traffic environments such as malls, institutions, hotels, and tech parks



Custom-engineered using iBwave for optimal performance and aesthetic alignment



Fully scalable and 5G-ready for long-term relevance

## Multiple Input, Multiple Output (MIMO)

iBUS leverages MIMO technology to improve wireless efficiency, reduce interference, and support high-density device environments.

- ✓ Ensures faster, more reliable wireless connectivity
- ✓ Supports high user volumes in venues like stadiums, offices, and public areas Enables multi-ISP support for flexibility and uptime assurance
- ✓ Optimizes bandwidth allocation for IoT, automation, and smart-building systems
- ✓ Delivers low-latency, high-speed performance for real-time digital applications

## Small Cells

iBUS deploys compact, energy-efficient Small Cells to extend reliable mobile coverage in high-traffic environments.

- ✓ Enhances coverage in areas where traditional macro towers underperform
- ✓ Reduces congestion, enabling faster speeds and improved voice quality
- ✓ Supports 5G expansion with targeted, high-speed network delivery
- ✓ Enables flexible deployment across urban and indoor spaces
- ✓ Eliminates dead zones and supports cost-effective network operations

## iBUS also delivers end-to-end managed Wi-Fi solutions through Microsense, an iBUS Enterprise



Fragmented Systems to Seamless Connectivity

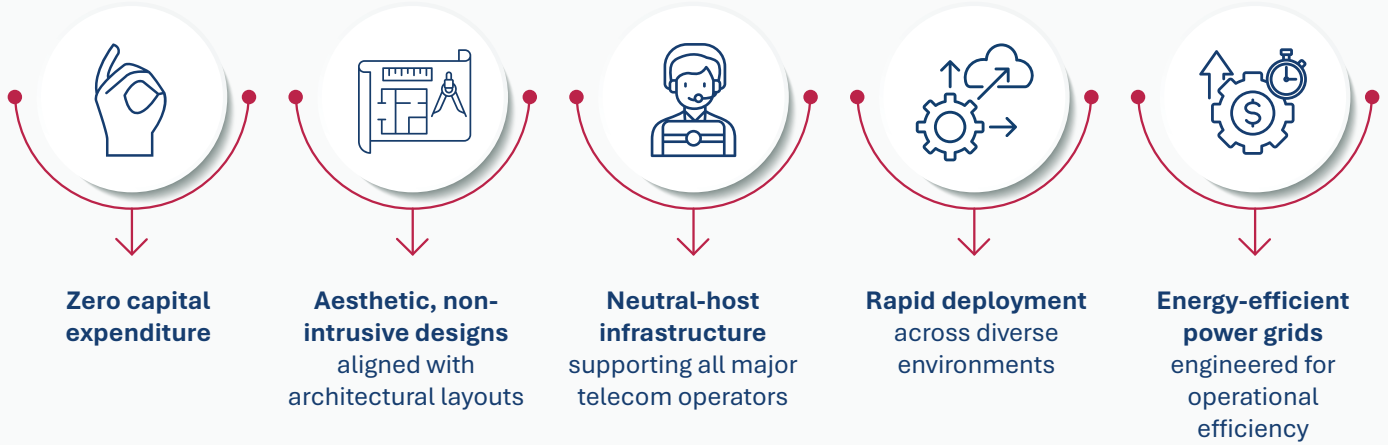


Dead Zones to Full Coverage

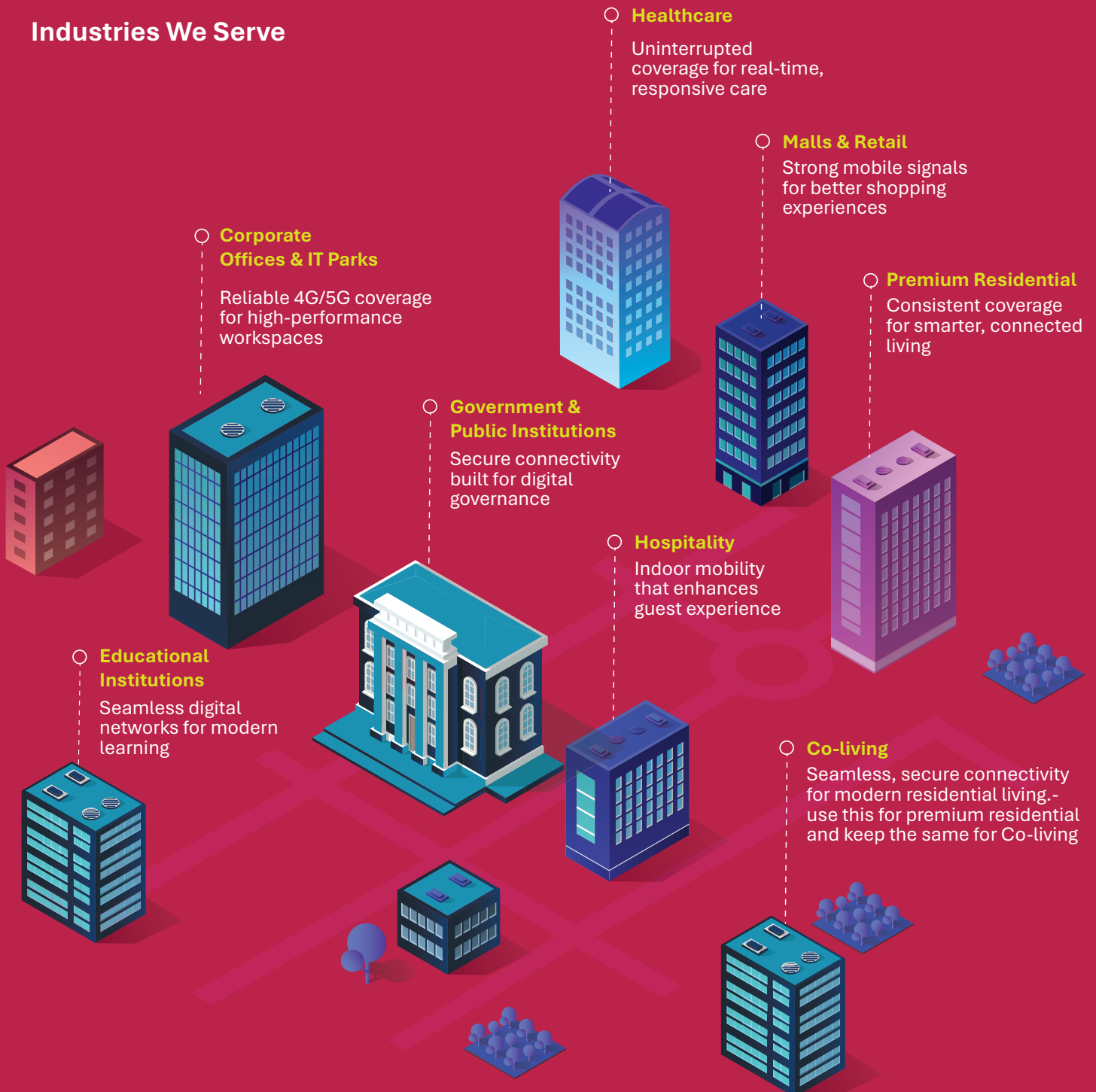


High Costs to Cost-Effective Operations

## Why Choose iBUS Mobility



## Industries We Serve



**iBUS Network & Infrastructure Pvt. Ltd.** is a digital infratech platform delivering seamless, end-to-end connectivity across industries.

**iBUS Mobility** enables in-building mobile connectivity through DAS, FTTx, and Small Cell solutions, ensuring strong, reliable signal coverage across all operator networks.

**Microsense Managed Wi-Fi**, an iBUS enterprise, delivers secure, high-speed, enterprise-grade Wi-Fi for hospitality, residential, commercial, and large-scale campuses.

Together, we empower enterprises across **7,000+ sites in 50+ cities** with high-speed, low-latency, always-on digital infrastructure.

## Trusted by

Commercial Business Parks													
Hospitality													
Healthcare													
Malls													
Premium Developers													
Other													

